

Northern Middlesex Regional Transportation Plan

FFY 2020-2040

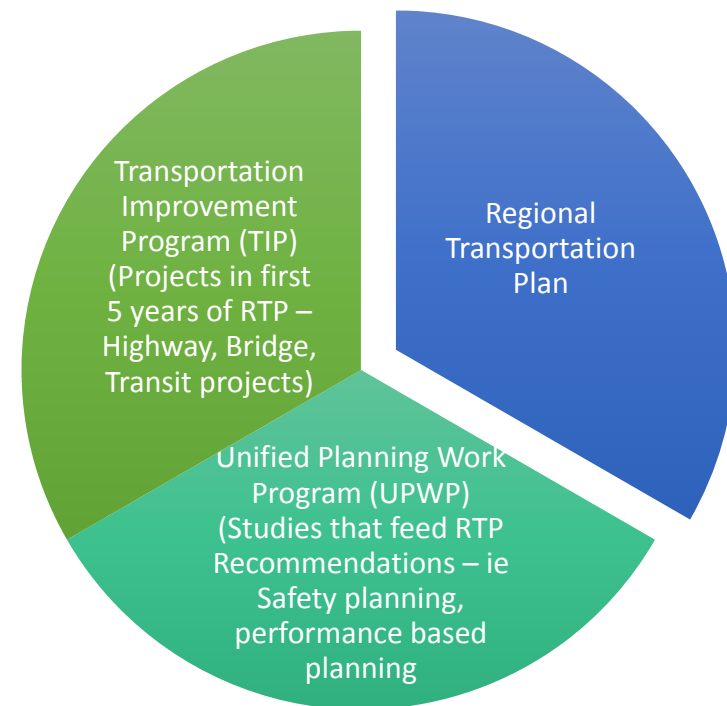
Prepared for the Northern Middlesex Metropolitan Planning Organization
(NMMPO)



What is the Regional Transportation Plan?

A long range planning document that:

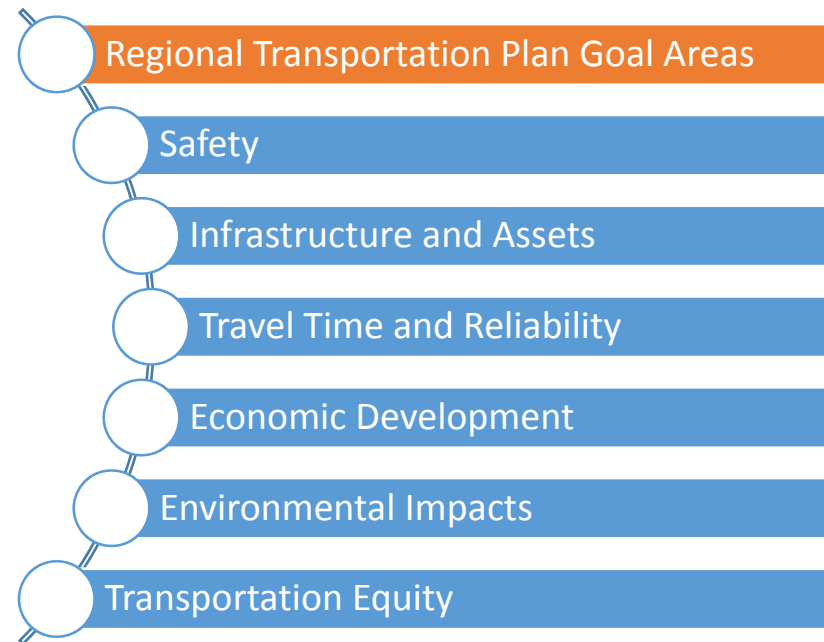
- Identifies and analyzes transportation Infrastructure and service improvement needs through the target year 2040.
- Serves as the framework for transportation investments in highways, bridges, public transportation, bicycle and pedestrian facilities and transportation related air quality improvement projects.
- Performance based planning approach
- Presents strategies to alleviate deficiencies in the transportation system
- Is financially constrained
- Advances construction of transportation improvement projects
- Reflects an equitable transportation system for all users
- Demonstrates air quality conformity



Reflecting A Regional Vision and Goals

The overarching vision of the RTP is to: *“develop a balanced, multi-modal, cost-effective, energy efficient transportation system connecting points inside and outside the Northern Middlesex Region”* by:

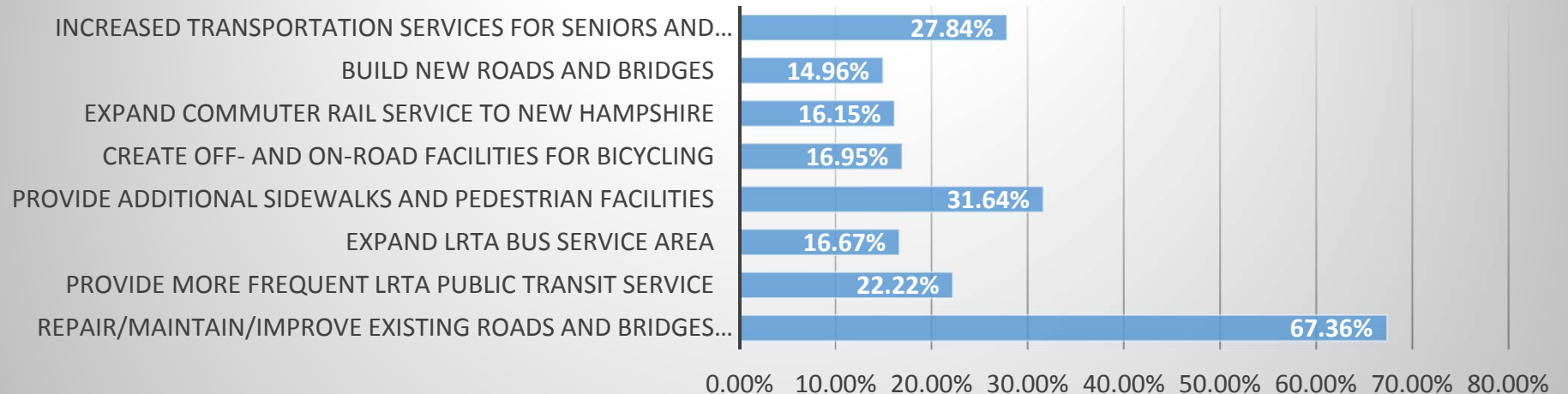
- Determining the current and projected transportation needs of the region’s residents, businesses, and institutions over the next 20 years;
- Assessing the ability of the existing transportation system to meet these needs; and
- Identifying a set of fiscally constrained strategies that best fill the gap between the capabilities of the existing transportation system and current and projected transportation needs.



Developing the RTP: Public Outreach



Transportation Issues Identified as Highest Priority



Developing the RTP: Public Outreach

Key Priority Areas in Each Community Noted during Public Outreach

Billerica – Route 3A/Billerica Center

Chelmsford – Ledge Road

Dracut – Mammoth Road at Lakeview Avenue

Dunstable – Dunstable Center/ Route 113

Lowell – Rourke Bridge Reconstruction

Pepperell – Route 113 at Park/Elm Street

Tewksbury – Route 38 Corridor

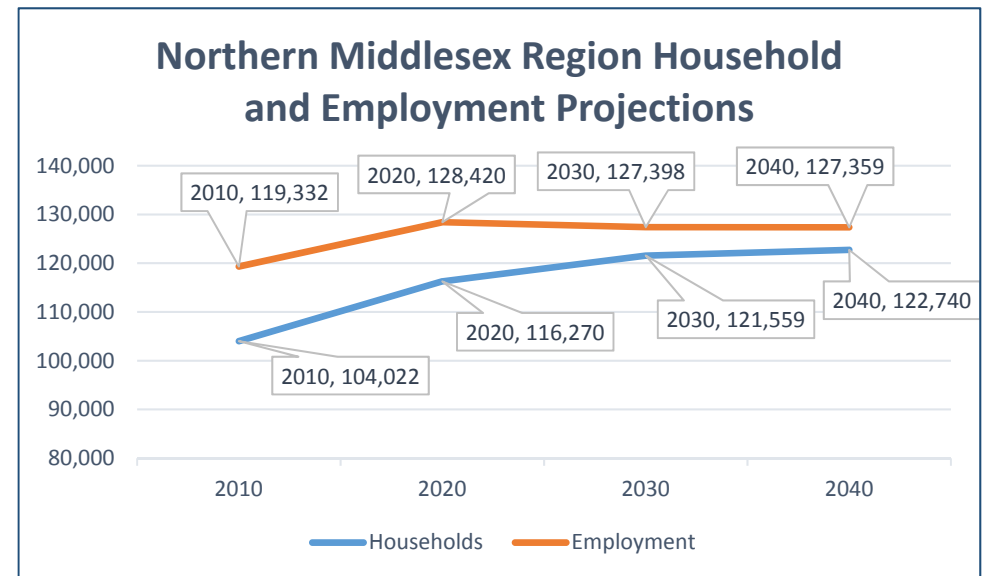
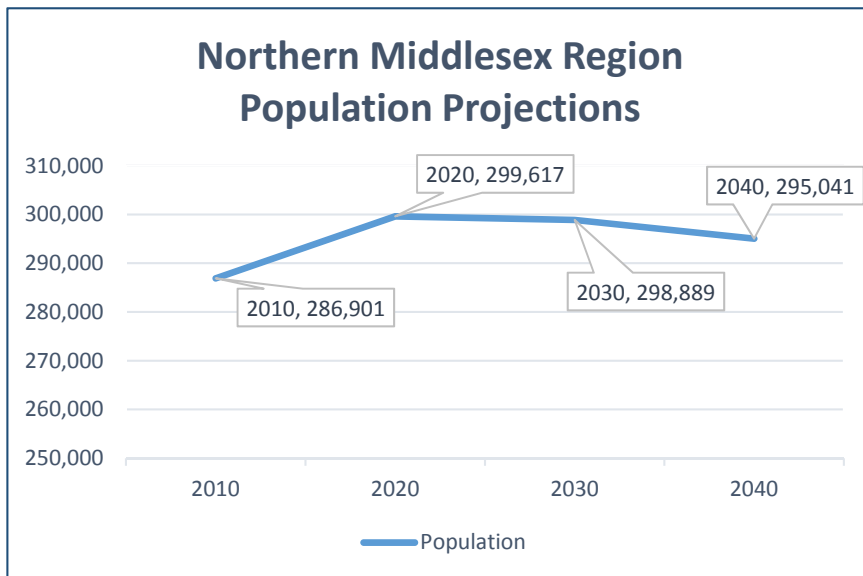
Tyngsborough – Tyngsborough Bridge/Town Center

Westford – Minot's Corner

Region – Extension of LRTA Bus Service (Nights and Weekends)

Forecasting the Future

- The RTP considers demographic projections for changes in population, households and employment in the region.
- MassDOT led effort through UMass Donohue Institute
- Between 2020 and 2040, population projections decrease, households increase, employment decreases.
- Overall Travel demand increases 4% over the life of the Plan



Funding the RTP

- Transportation Improvement Projects must come from a conforming RTP to be eligible for Federal funding
- The RTP must be financially constrained
- NMMPO Highway target funding over life of RTP: \$264,223,853 (*does not include statewide programs typically used to program bridge projects*)
- LRTA Transit Funding: \$406,026,358 (*Total Anticipated Revenues*)

Category	Statewide Funding Potentially for NMMPO Highway Assets					
	2020-2024	2025-2029	2030-2034	2035-2039	2040	Total
Statewide Interstate Maintenance	\$6,151,829	\$7,768,096	\$9,538,216	\$10,571,689	\$2,248,578	\$36,278,408
Statewide NHS	\$12,810,094	\$15,248,892	\$18,723,664	\$20,752,387	\$4,413,992	\$71,949,029
Statewide Bridge Program	\$28,376,820	\$32,280,745	\$39,636,574	\$43,931,227	\$9,344,086	\$153,569,452
NFA Bridge Preservation	\$19,548,000	\$19,978,056	\$20,417,573	\$20,866,760	\$4,265,166	\$85,075,555
Remaining Statewide Programs	\$43,882,039	\$49,316,846	\$60,554,700	\$67,115,848	\$14,275,410	\$235,144,843
Northern Middlesex Available Target Funding (MARPA Formula 3.9096%)	\$48,513,053	\$55,620,728	\$68,295,049	\$75,694,871	\$16,100,152	\$264,223,853

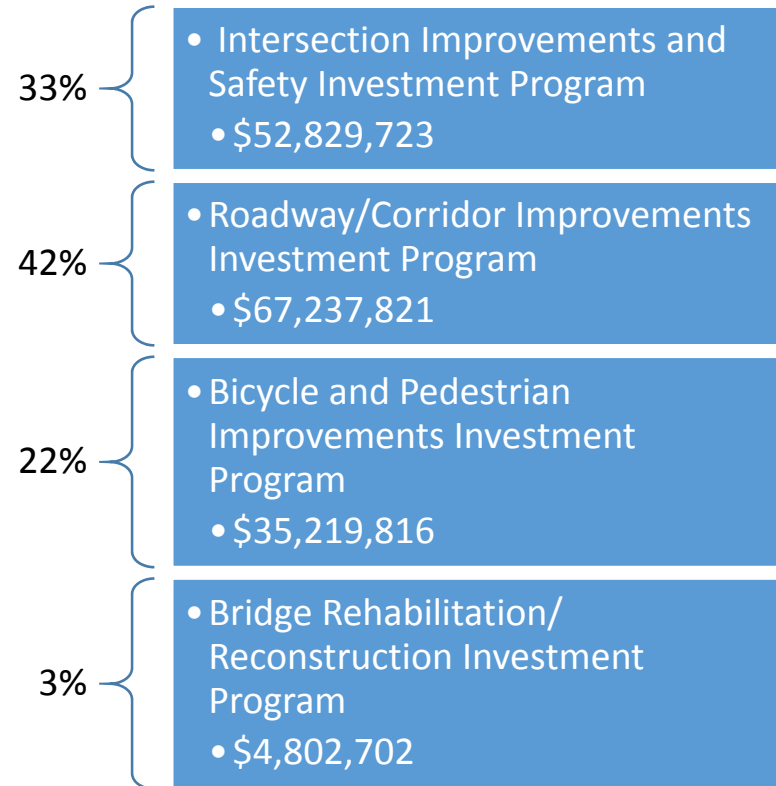
RTP Recommendations Highway Targets

RECOMMENDED PROJECTS FFY 2020-2029

FFY 2020-2024 project recommendations reflect programmed in the FFY 2020-204 TIP, endorsed by the MPO on May 22, 2019 - \$43,488,467

FFY 2025-2029 project recommendations include MassDOT TIP eligible projects currently in the design phase - \$38,122,427

RECOMMENDED PROGRAMS FFY 2030-2040



RTP Recommendations - Transit

Capital: \$103,319,794

Operational: \$302,477,834

LRTA Fleet

- Fixed Route Buses over 35 Ft - \$42,160,313
- Fixed Route Buses under 35 Ft - \$3,307,311
- Support Vehicles - \$315,000
- Preventative Maintenance - \$48,719,045

Facility Upgrades

- Facilities - \$3,275,000
- Equipment - \$3,543,125

Realignment of Existing Routes

- 4 Recommended Route Changes – Negligible costs associated with changes

Additional Service

- Sunday Service: \$325,000 (Pilot Program)
- Full Sunday Service: \$27,178,000 (if funded)

Next Steps

- NMMPO Consideration to Release the Draft FFY 2020-2040 Regional Transportation Plan for a 21-Day Public Comment Period
- Potential Public Input Meeting Date: July 16, 2019
- Potential Consideration for Endorsement at Next MPO Meeting - Date: July 24, 2019
- Full Draft Document can be found at:
<http://www.nmcog.org/regional-transportation-plan>